



INTERNATIONAL JOURNAL OF ACADEMIC RESEARCH IN BUSINESS & SOCIAL SCIENCES



Analyze the Influence of Information Asymmetric Management on the Lending Performance of the Commercial Banks in Rwanda.

Mukasafari Chantal, G. S. Namusonge, Jaya Shukla

To Link this Article: <http://dx.doi.org/10.6007/IJARBSS/v11-i5/9892>

DOI:10.6007/IJARBSS/v11-i5/9892

Received: 04 March 2021, **Revised:** 07 April 2021, **Accepted:** 26 April 2021

Published Online: 17 May 2021

In-Text Citation: (Chantal et al., 2021)

To Cite this Article: Chantal, M., Namusonge, G. S., & Shukla, J. (2021). Analyze the Influence of Information Asymmetric Management on the Lending Performance of the Commercial Banks in Rwanda. *International Journal of Academic Research in Business and Social Sciences*, 11(5), 171–189.

Copyright: © 2021 The Author(s)

Published by Human Resource Management Academic Research Society (www.hrmars.com)

This article is published under the Creative Commons Attribution (CC BY 4.0) license. Anyone may reproduce, distribute, translate and create derivative works of this article (for both commercial and non-commercial purposes), subject to full attribution to the original publication and authors. The full terms of this license may be seen at: <http://creativecommons.org/licences/by/4.0/legalcode>

Vol. 11, No. 5, 2021, Pg. 171 - 189

<http://hrmars.com/index.php/pages/detail/IJARBSS>

JOURNAL HOMEPAGE

Full Terms & Conditions of access and use can be found at
<http://hrmars.com/index.php/pages/detail/publication-ethics>



INTERNATIONAL JOURNAL OF ACADEMIC RESEARCH IN BUSINESS & SOCIAL SCIENCES



www.hrmars.com

ISSN: 2222-6990

Analyze the Influence of Information Asymmetric Management on the Lending Performance of the Commercial Banks in Rwanda.

Mukasafari Chantal

PHD candidate, Department of Economics, Accounting and Finance in the School of Business, in partial fulfillment for the award of the degree of Doctor of Philosophy in Business Administration of the Jomo Kenyatta University of Agriculture and Technology.

Prof. G. S. Namusonge

Jomo Kenyatta University of Agriculture and Technology / Nairobi-Kenya.
Email: gsgnamusonge@gmail.com

Dr Jaya Shukla

Jomo Kenyatta University of Agriculture and Technology /Kigali-Rwanda.
Email: js.jayashukla@gmail.com

Abstract

To analyze the Influence of Information asymmetric management on the Lending Performance of Commercial Banks in Rwanda. This study is important to various stakeholders in particular the Government of Rwanda, academicians, professionals, and researchers. In this thesis, the researcher aimed at developing the notion conceptually, specifically, built on the work of (Chepkoech & Francis, 2014) and (Rannenberg, 2012), whom their works were based on the Information asymmetric in credit markets, bank leverage cycles, and macroeconomic dynamics. Two critical aspects formed the guiding philosophy of the entire research process and these were: (1) the Role of Financial institutions on maintaining the monetary stability and the Political factor as the monetary regulator both as the fundamental actors of Lending Performance of Commercial Banks. The study adopted a descriptive survey as study design. The target population of the study was 931 from Bank of Kigali, Bank Populaire du Rwanda, I &M Bank, Cogebanque, Ecobank, KCB, Equity, GT-Bank, Access Bank, and CraneBank (BCR) where 280 Questionnaires were distributed to selected individuals through stratified and purposive sampling methods and different individuals such as DGs, CEOs, Directors, Head of Units, Specialists, Experts, Professionals from Rwanda were part of the study. The primary data was collected through structured questionnaires; whereas secondary data through reading and analysis of relevant books, reports and journals. The data collected was edited, coded, and fed into SPSS software v. 16 and e-views 3 for analysis, using descriptive, inferential statistics and econometrics. Regression analysis was done to investigate the

relationship between hypothesized variables. The study found out that Propitious Selection management has a strong influence on the lending performance of Commercial Banks in Rwanda; where it contributes ($\beta=0.970$) on Working Capital (WC) and ($\beta=0.708$) on Retained Earnings (RE); Political Drive as a moderating variable plays a positive role on the influencing the Information asymmetric management and on the lending performance of Commercial Banks in Rwanda; where it was influenced ($\beta=0.783$) for Working Capital (WC) and ($\beta=0.789$) on Retained Earnings (RE); moral hazard management to has a significant influenced the lending performance of Commercial Banks in Rwanda on ($\beta=0.899$) for Working Capital (WC) and ($\beta=0.601$) on Retained Earnings (RE); however, on the lending performance of Commercial Banks in Rwanda; adverse selection management demonstrates a weak influence on the lending performance of Commercial Banks in Rwanda with ($\beta=.542$) on Working Capital (WC) and ($\beta =.500$) on Retained Earnings (RE). On conclusion, the researched found out that Information asymmetric management has a statistically significant contribution to the lending performance of Commercial Banks in Rwanda

Introduction

Background

- ▶ At the global perspective, the component of information asymmetry initiated in 1970. It has become a valuable tool in field of economic and Finance, and it demonstrated a tangible impact since 2000. Because of development of introduction of information technology, many services are done with less manpower like electronic payment, security investment, information exchange and products in transaction. Asymmetric information was useful tool designed to help in the management and control of the corporate financial in Spain. Tunisian companies affect exports at low level of cost due to information.
- ▶ At the continental perspective, concept of information asymmetry goes back to the colonialism and in this time commercial banks have issues of surplus liquidity. According to the report of World Bank (2015) all continents of world the poverty has been decreasing except Africa because of consequence of colonialism. And For Jappeli & Pagano, 2002 information asymmetry should be managed in Africa between lenders and borrowers.
- ▶ At the regional perspective, is about East African Community (EAC). Region members of EAC (Burundi, Kenya, Rwanda, Tanzania, Uganda) have been starting the business forecast information which play a vital role in the commercial banks operating in Rwanda, and people consider it as the life blood of a growing economy.
- ▶ At the national perspective, According to Muyombano, 2018, after genocide, Rwanda has envisaged a set of national policies which the goal of transforming the agrarian subsistence economy into a sophisticated knowledge-based society. This was a great achievement exemplary for performance in economy, social and political affairs supported by its vision 2020 set to respond on different components of information asymmetry. For National Bank of Rwanda 2015 and MINECOFIN 2000, the commercial Banks of Rwanda have improved 72% of Rwandan 42% in Formal Financial System and 58% in informal financial system.

Statement of the Problem

- ▶ Campbell (2007) indicates that Rwanda has the highest level of NPLs (Non Performing Loan) compared to the rest of the East African States.

Research Objectives

General Objective

The general objective of the study is to analyze the influence of information asymmetric management on the lending performance of Commercial Banks in Rwanda.

Specific Objectives

The specific objectives of the study are

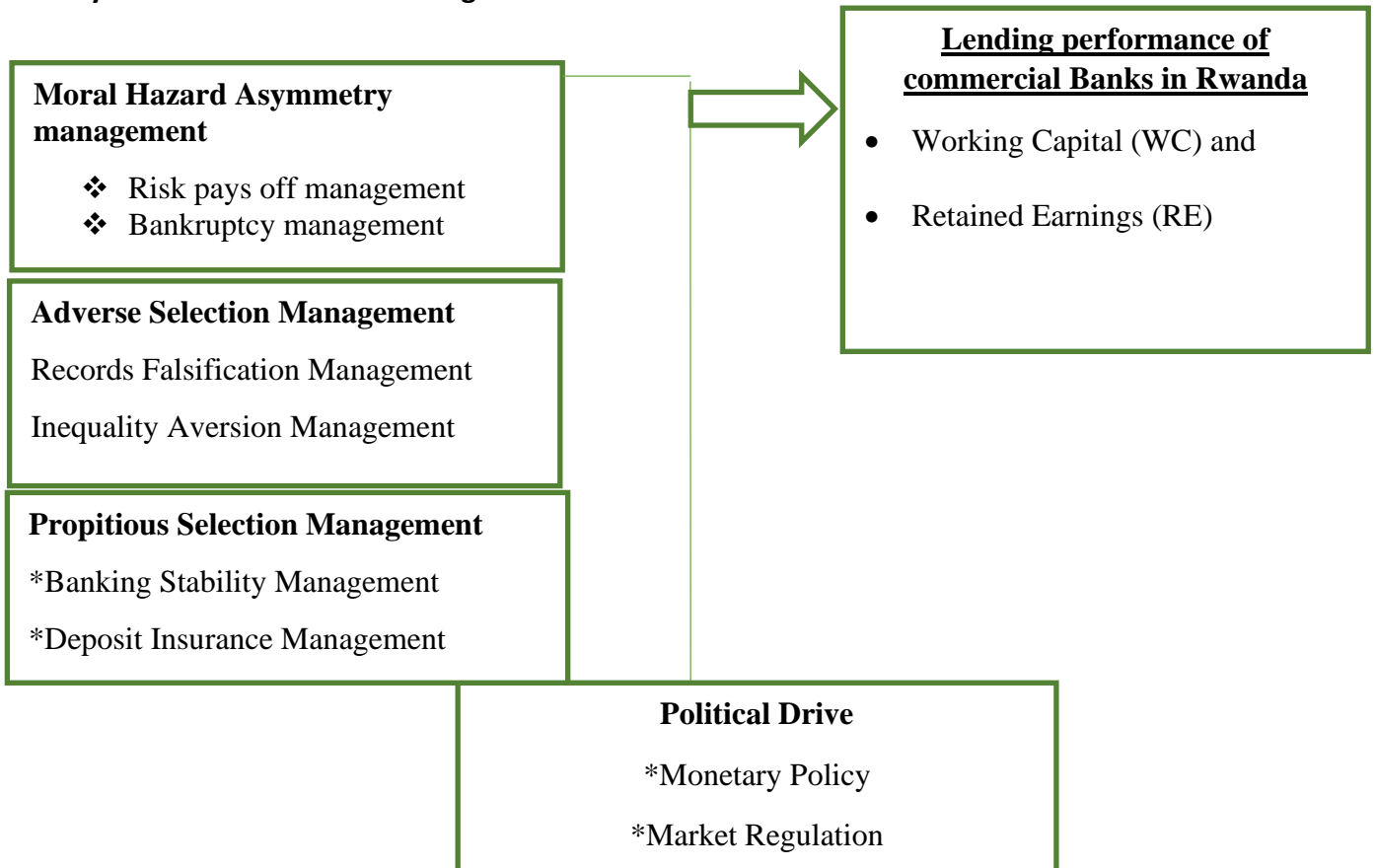
- To assess the influence of moral hazard management on lending performance of Commercial Banks in Rwanda.
- To demonstrate the importance of adverse selection management on the lending performance of Commercial Banks in Rwanda.
- To understand the contribution of Propitious Selection management on the lending performance of Commercial Banks in Rwanda.
- To analyse the moderating effect of political drive on the influence of information asymmetric management and lending performance of Commercial Banks in Rwanda.

Conceptual framework

Independent Variable

Dependent Variable

Asymmetric Information Management



Research Methodology

Research design

The study followed both correlation and comparative designs, and was both qualitative and quantitative.

Target Population

Population is the study object, which may be individuals, group, organizations human and events, or the conditions to which they are exposed. The population under study was comprised of board of directors, executives, top managers, middle managers and lower managers of 10 strong market leadership in banking sector in Rwanda. The total target population were 931 people .

Sample Frame

Table 3.1:Sample frame

Targeted Banks	Target Population	Proportion (%)	Sample
Bank of Kigali	112	12.03	33
Bank Populaire du Rwanda	149	16.00	44
I &M Bank	87	9.34	26
Cogebanque	79	8.49	24
Ecobank	102	10.96	30
KCB	104	11.17	31
Equity	63	6.77	19
GT-Bank	103	11.06	31
Access Bank	68	7.30	20
CraneBank	64	6.87	19
Total	931	100	278

Source: (BNR & Researcher, 2016)

Sample and Sampling Technique

The sample size is selected using the Yamane formula = $\frac{N}{1+N(e)^2} = \frac{931}{1+931*(0.05)^2} = 278$, and then, n= 278 employees .

Data Collection Instruments.

The researcher used both primary and secondary data as practical means of obtaining information related to the research topic. The primary data was obtained using questionnaire and interview. Secondary data were sourced from annual reports of 10 selected commercial banks.

Model specification

Multiple Linear Regression Model

The study employed a multiple linear regression model given by equation 3.4 below

$Y = \beta_0 + \beta_1 X_1 + \beta_2 X_2 + \beta_3 X_3 + \varepsilon$ without the moderator, and

$Y = \beta_0 + \beta_1 X_1 * Z + \beta_2 X_2 * Z + \beta_3 X_3 * Z + \varepsilon$, with the moderator3.4

Where:

- i. Y: Lending performance of commercial banks in Rwanda
- ii. X_1 : moral hazard management
- iii. X_2 : adverse selection management

- iv. X_3 : Propitious Selection management
- v. Z : Political drive
- vi. θ_0 : coefficient of intercept
- vii. $\beta_1 - \beta_3$: The corresponding coefficients for the respective independent variables for Information asymmetric management
- viii. ε : error term

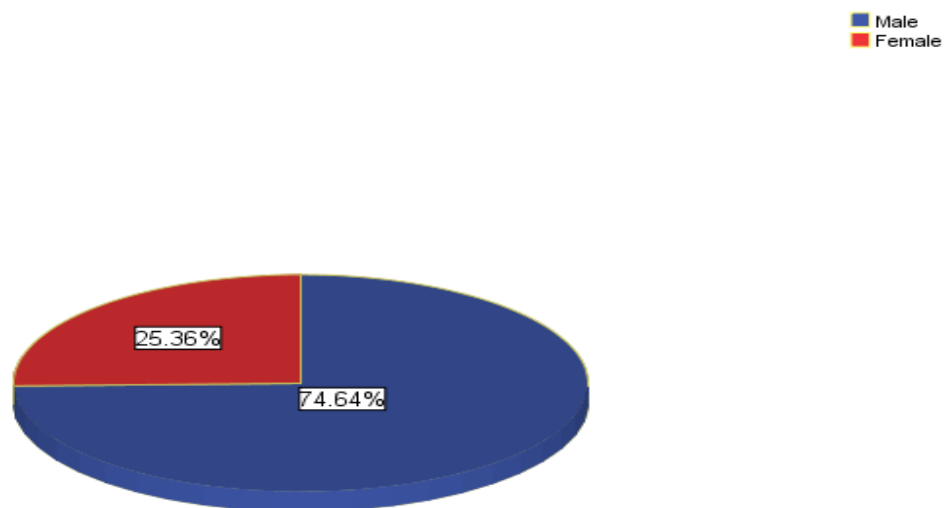
Data Presentation, Analysis, and Interpretation

Introduction

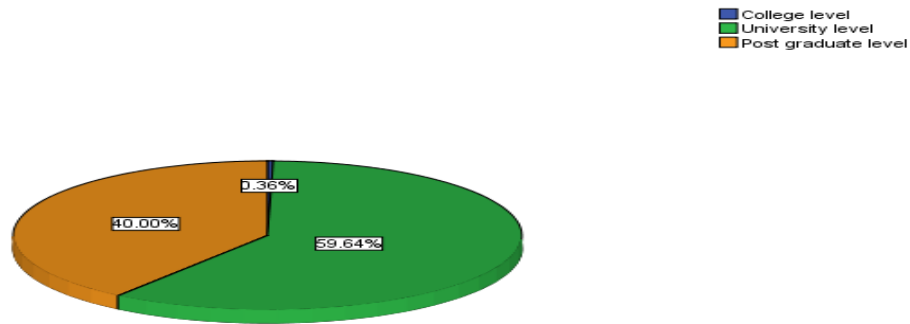
This chapter presents the results and findings of the study according to the research objectives and hypotheses. Frequencies mean and percentages were used to analyze data descriptively, while inferential statistics using regression analysis was conducted for the purpose of testing hypothesis and predicting the relationship between the independent and dependent variables.

Figure. 1: Gender of respondents

Level of Education



Respondents' qualifications varied greatly with a higher proportion of employees having university-level education at 59.64%, Post University at 40%, and college level at 0.36%.



Source: Primary data, 2019

Figure 2: Level of education

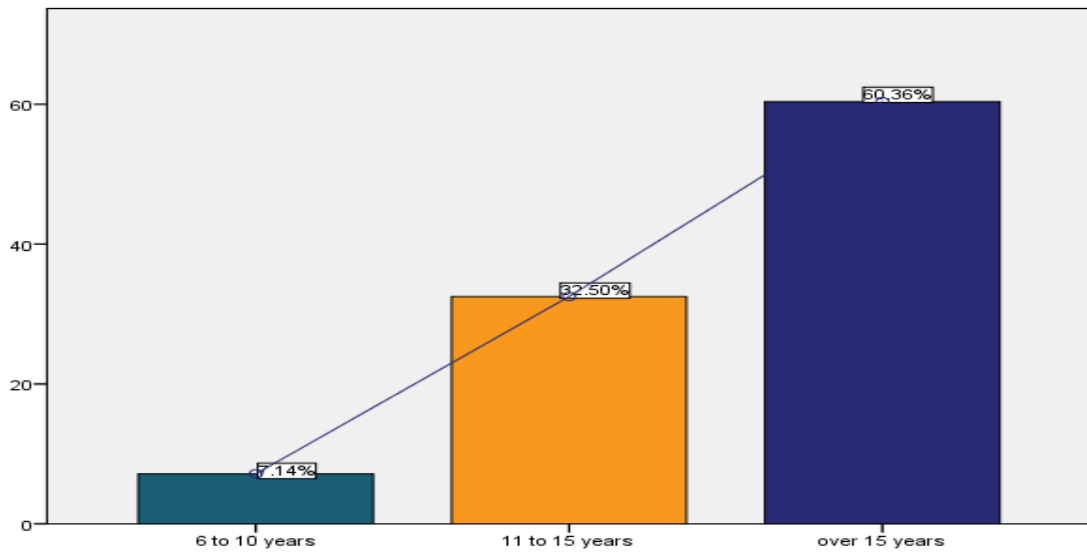
Table 4. 1 Working experience in commercial banks

		Frequency	Percent	Valid Percent	Cumulative Percent
Valid	less than 2 years	4	1.4	1.4	1.4
	3 to 5 years	261	93.2	93.2	94.6
	Over 5 years	15	5.4	5.4	100.0
	Total	280	100.0	100.0	

Source: Primary data, 2019

How long has the commercial bank been in operation?

The results from table 4. 3 indicate that majority of commercial banks had been in operation over 15years with 60.4%, followed by 11 to 15 years with 32.5%, lastly 6 to 10 years with 7.1%.



Source: Primary data, 2019

Table 4. 2: Moral hazard management under information asymmetric management indicates the process by which investors latent demands are ultimately translated into prices affect the lending performance of commercial banks in Rwanda

		Frequency	Percent	Valid Percent	Cumulative Percent
Valid	Strongly agree	184	65.7	65.7	65.7
	Agree	87	31.1	31.1	96.8
	Disagree	4	1.4	1.4	98.2
	Strongly disagree	5	1.8	1.8	100.0
	Total	280	100.0	100.0	

Source: Primary data, 2019

Table4. 3: The risks of ell managed as an aspect of moral hazard management information has a positive impact on the investors latent demands and are ultimately translated into volumes of the lending performance of commercial banks in Rwanda

		Frequency	Percent	Valid Percent	Cumulative Percent
Valid	Strongly agree	179	63.9	63.9	63.9
	Agree	91	32.5	32.5	96.4
	Disagree	5	1.8	1.8	98.2
	Strongly disagree	5	1.8	1.8	100.0
	Total	280	100.0	100.0	

Source: Primary data, 2019

Table4. 4: The bankruptcy management under moral hazard management under information asymmetric management demonstrate and facilitates the ability of market participants to observe information about the trading process which improve the lending performance of commercial banks in Rwanda

		Frequency	Percent	Valid Percent	Cumulative Percent
Valid	Strongly agree	183	65.4	65.4	65.4
	Agree	88	31.4	31.4	96.8
	Disagree	4	1.4	1.4	98.2
	Strongly disagree	5	1.8	1.8	100.0
	Total	280	100.0	100.0	

Source: Primary data, 2019

Table4. 5: Do you think moral hazard under management information asymmetric management with strongly oriented strategies can influence the lending performance in Rwanda?

		Frequency	Percent	Valid Percent	Cumulative Percent
Valid	Yes	280	100.0	100.0	100.0

Source: Primary data, 2019

Table4. 6: The adverse selection management under information asymmetric management is primarily concerned with maximizing shareholder value through long-term financial planning is affecting the lending performance of commercial banks in Rwanda

		Frequency	Percent	Valid Percent	Cumulative Percent
Valid	Strongly agree	183	65.4	65.4	65.4
	Agree	89	31.8	31.8	97.1
	Disagree	4	1.4	1.4	98.6
	Strongly disagree	4	1.4	1.4	100.0
	Total	280	100.0	100.0	

Source: Primary data, 2019

Table4. 7: The records falsification under the adverse selection under information asymmetric management information is used to control and analyze the previous client's information on different loan taken which should influence the next commercial bank's operations.

		Frequency	Percent	Valid Percent	Cumulative Percent
Valid	Strongly agree	177	63.2	63.2	63.2
	Agree	92	32.9	32.9	96.1
	Disagree	4	1.4	1.4	97.5
	Strongly disagree	7	2.5	2.5	100.0
	Total	280	100.0	100.0	

Source: Primary data, 2019

Under information asymmetric management in Rwanda presents numerous opportunities for Financial activities when the financial institutions take into a serious business occasion.

		Frequency	Percent	Valid Percent	Cumulative Percent
Valid	Strongly agree	181	64.6	64.6	64.6
	Agree	91	32.5	32.5	97.1
	Disagree	4	1.4	1.4	98.6
	Strongly disagree	4	1.4	1.4	100.0
	Total	280	100.0	100.0	

Source: Primary data, 2019

The results from table 4.12 show that 64.6% strongly agreed that The inequality aversion managed by the adverse selection management under information asymmetric management in Rwanda present numerous opportunities for Financial activities when the financial institutions take into a serious business occasion, 32.5% agreed, 1.4% strongly disagreed while 1.4% disagreed on the inequality aversion managed by the adverse selection management under information asymmetric management in Rwanda present numerous opportunities for Financial activities when the financial institutions take into a serious business occasion.

Table4. 8: on your experience, does adverse selection management under information asymmetric management has an importance on the lending performance of the commercial bank in Rwanda?

	Frequency	Percent	Valid Percent	Cumulative Percent
Valid Yes	280	100.0	100.0	100.0

Source: Primary data, 2019

Table4. 9: The propitious selection management occurs when risk-avoiding personalities both take physical precautions and buy financial security (insurance) which stabilize the insurance market

	Frequency	Percent	Valid Percent	Cumulative Percent
Valid Strongly agree	184	65.7	65.7	65.7
Agree	87	31.1	31.1	96.8
Disagree	4	1.4	1.4	98.2
Strongly disagree	5	1.8	1.8	100.0
Total	280	100.0	100.0	

Source: Primary data, 2019

Table4. 10: The banking stability management is used to strengthen the efficiency allocating resources, assessing and managing financial risks, maintaining employment levels close to the economy's natural rate, and eliminating relative price movements of real or financial assets that affect the monetary stability or employment levels.

		Frequency	Percent	Valid Percent	Cumulative Percent
Valid	Strongly agree	178	63.6	63.6	63.6
	Agree	93	33.2	33.2	96.8
	Disagree	4	1.4	1.4	98.2
	Strongly disagree	5	1.8	1.8	100.0
	Total	280	100.0	100.0	

Source: Primary data, 2019

Table4. 11: the deposit insurance management should be used to ensure all commercial such as saving, fixed, current, recurring, term loan, cash credit, and bills exchange discounting to contribute to the lending performance of commercial banks in Rwanda.

		Frequency	Percent	Valid Percent	Cumulative Percent
Valid	Strongly agree	178	63.6	63.6	63.6
	Agree	93	33.2	33.2	96.8
	Disagree	4	1.4	1.4	98.2
	Strongly disagree	5	1.8	1.8	100.0
	Total	280	100.0	100.0	

Source: Primary data, 2019

Table4. 12: On your experience, does propitious selection management contributes to the lending performance of commercial banks in Rwanda?

		Frequency	Percent	Valid Percent	Cumulative Percent
Valid	Yes	280	100.0	100.0	100.0

Source: Primary data, 2019

The results from table 4.18 illustrate that all respondents 100% confirmed propitious selection management contributes to the lending performance of commercial banks in Rwanda.

Table4. 13: If Yes, which area as illustrated in the table below?

	Cases		N	Percent	N	Percent	Total	N	Percent
	Included	Excluded							
	N	Percent							
Liabilities (current account, saving account, fixed and deposits) insured management	92	32.9%	188	67.1%	280	100.0%			
Assets (loan, cash in hands, credit cards, trade finance and investments) insurance management	200	71.4%	80	28.6%	280	100.0%			
other financial asset (Insurance, investment services and money transfers) insurance management	92	32.9%	188	67.1%	280	100.0%			
other propitious selection management	4	1.4%	276	98.6%	280	100.0%			

Source: *Primary data, 2019*

Table4. 14: The political drive well oriented to the national interest has a positive effect on lending performance management on the lending performance of commercial banks in Rwanda.

		Frequency	Percent	Valid Percent	Cumulative Percent
Valid	Strongly agree	183	65.4	65.4	65.4
	Agree	87	31.1	31.1	96.4
	Disagree	4	1.4	1.4	97.9
	Strongly disagree	6	2.1	2.1	100.0
	Total	280	100.0	100.0	

Source: Primary data, 2019

Table4. 15: The market regulation management under the political drive is the main aspect that provides the government to regulate the commercial banks' lending performance in Rwanda.

		Frequency	Percent	Valid Percent	Cumulative Percent
Valid	Strongly agree	180	64.3	64.3	64.3
	Agree	88	31.4	31.4	95.7
	Disagree	5	1.8	1.8	97.5
	Strongly disagree	7	2.5	2.5	100.0
	Total	280	100.0	100.0	

Source: Primary data, 2019

Table4. 16: The value like interest rate well determined should facilitate the equilibrium strategies on both clients and providers of lending performance of commercial banks

		Frequency	Percent	Valid Percent	Cumulative Percent
Valid	Strongly agree	179	63.9	63.9	63.9
	Agree	92	32.9	32.9	96.8
	Disagree	4	1.4	1.4	98.2
	Strongly disagree	5	1.8	1.8	100.0
	Total	280	100.0	100.0	

Source: Primary data, 2019

Table4. 17: The economic growth benefit of higher living standards, real incomes, and ability to devote more resources improved the lending performance of the commercial bank in Rwanda

		Frequency	Percent	Valid Percent	Cumulative Percent
Valid	Strongly agree	183	65.4	65.4	65.4
	Agree	88	31.4	31.4	96.8
	Disagree	4	1.4	1.4	98.2
	Strongly disagree	5	1.8	1.8	100.0
	Total	280	100.0	100.0	

Source: Primary data, 2019

Table4. 18: The services in the largest sector of the Rwanda economy and accounts for 53 percent of total Working Capital (WC) that improve not only the commercial bank's income but also the client's benefit

		Frequency	Percent	Valid Percent	Cumulative Percent
Valid	Strongly agree	182	65.0	65.0	65.0
	Agree	89	31.8	31.8	96.8
	Disagree	4	1.4	1.4	98.2
	Strongly disagree	5	1.8	1.8	100.0
	Total	280	100.0	100.0	

Source: Primary data, 2019

Table4. 19: The important Retained Earnings(RE) fix at the natural level in the basis attraction for the FDI which impacts the lending performance of commercial banks in Rwanda.

		Frequency	Percent	Valid Percent	Cumulative Percent
Valid	Strongly agree	180	64.3	64.3	64.3
	Agree	91	32.5	32.5	96.8
	Disagree	4	1.4	1.4	98.2
	Strongly disagree	5	1.8	1.8	100.0
	Total	280	100.0	100.0	

Source: Primary data, 2019

Table4. 20: contribution of information Asymmetric management on the lending performance of commercial banks in Rwanda (Working Capital (WC))

• Dependent Variable: Lending performance of commercial banks in Rwanda(GDP per capita)					
Sample: 280					
Included Observations: 280					
I. Variable: FPS	Coefficient		Std. Coefficient	t-Statistics	Prob.
	B	Std. Error	Beta		
1(Constant)	2.603	0.22		11.274	0.000
Moral hazard management	0.701	0.15	0.017	3.262	0.031
Adverse selection management	0.600	0.09	0.009	3.389	0.040
propitious Selection information asymmetric management	0.808	0.013	0.901	8.197	0.001
R	0.796		Mean dependent variable		1.877
R-squared	0.796		S.D. dependent variable		0.685

Adjusted R-squared	0.701	Durbin-Watson statistics	1.766
F-statistics	6.214	Standard Error of Estimate	0.256
Prob (F-statistic)	0.003		

Source: Survey Data 2019

Conclusions

In conclusion, the researcher brought out the summary based on the findings by demonstrating the role of each independent variable vis-à-vis to the dependent variable and its indicators for instance Working Capital (WC) and Retained Earnings (RE). Besides, this conclusion demonstrates the findings based on the level of contribution of each Information asymmetric management pillars according to the two indicators of Working Capital (WC) and Retained Earnings (RE).

Conclusion on the contribution of the propitious selection management on the lending performance of Commercial Banks in Rwanda.

The researcher findings demonstrate that propitious selection management contributes to the lending performance of Commercial Banks in Rwanda. where the econometrics and statistical analysis shows the ties contribution of propitious selection management with $\beta=0.873$ on Working Capital (WC) and $\beta=0.874$ Retained Earnings (RE). With p-value $0.03 < 0.05$,

Conclusion of the effect of political drive on the influence of information asymmetry management on the lending performance of Commercial Banks in Rwanda

The researcher findings demonstrate that political drive has a positive influence on information asymmetry management on the lending performance of Commercial Banks in Rwanda; where econometrics and statistical analysis shows positive contribution with $\beta=0.783$ on Working Capital (WC) and $\beta=0.789$ on Retained Earnings (RE).

Conclusion on moral hazard management on the lending performance of Commercial Banks in Rwanda.

The researcher findings demonstrate that moral hazard management has tied influence on the lending performance of Commercial Banks in Rwanda; where econometrics and statistical analysis shows positive contribution with $\beta=0.783$ on Working Capital (WC) and $\beta=0.789$ on Retained Earnings (RE).

The researcher findings demonstrate that 100% of respondents confirmed that moral hazard management has contributed to the lending performance of Commercial Banks in Rwanda. With a p-value of $0.003 < 0.05$.

Conclusion on the effect of adverse selection management and lending performance of Commercial Banks in Rwanda.

The researchers' findings demonstrate that the adverse selection management plays a positive role in the lending performance of Commercial Banks in Rwanda. The findings

showed that 100% of respondents confirmed that adverse selection management has an effect on the lending performance of Commercial Banks in Rwanda. The statistical analysis shows the positive contribution of adverse selection management on lending performance of Commercial Banks in Rwanda. with $\beta=0.685$ on Working Capital (WC) and $\beta= 0.589$ on Retained Earnings (RE). With p-value $0.002 < 0.05$.

Significance of the Study

This study is important to various stakeholders in particular the Government of Rwanda, financial institutions, Commercial Banks in specific, different academicians, professionals, and researchers. In this work, the researcher aimed at developing the notion conceptually. Specifically, the researcher built on the work of (Richard, 2006), where the pillars determined such as Moral Hazard management, Adverse Selection management, and Propitious Selection management. That influenced the lending performance of Commercial Banks in Rwanda.

Recommendations

Based on the results, findings, and conclusions on the Study, the outlines of recommendations were determined. This was done in view of the study objectives.

Recommendations on the contribution of Propitious Selection management on the lending performance of Commercial Banks in Rwanda;

The study recommends that the government of Rwanda should diversify the Propitious Selection management policy and monetary regulation to make sure its influence becomes strong maintain and visible in order to ensure lending provided by Commercial Banks in Rwanda are well performance.

Recommendations on the effect of political drive on the influence of information asymmetric management and lending performance of Commercial Banks in Rwanda.

The Researcher recommends that the Government of Rwanda's Monetary policy and Financial Market Regulation on the Lending performance of commercial banks and its application should be more friendly and attractive to local and foreigners' business actors.

Recommendations on the influence of moral hazard management and lending performance of Commercial Banks in Rwanda;

The Researcher, recommends that the Government of Rwanda and Civil society should diversify the moral hazard management with all financial bodies to accomplish these mentioned gaps.

The Researcher recommends that a monitoring of Rwanda's lending financial performance on a regular basis should be taken into consideration in order to understanding trends, patterns in the financial aspect and provides an opportunity to highlight emerging issues on both business components.

Recommendations on the importance of adverse selection management on the lending performance of Commercial Banks in Rwanda

The Researcher recommends that financial institutions and Civil society to diversify the adverse selection management by change the mechanism and strategies used to make sure is well oriented to the positive influence to achieve the Working Capital (WC) and Retained Earnings (RE) operation.

The Rwandan Financial sector and civil society understand the government policy and strategies to maintain financial partnership support the implementation of adverse selection management on achieving on the lending performance of Commercial Banks in Rwanda

REFERENCES

- Abdi, D. (2010). FINANCIAL PERFORMANCE EVALUATION (A Case Study of Awash International Bank (AIB): A Research project submitted to the Department of Accounting and Finance, College of Business and Economics, Mekelle University, for the partial Fulfillment.
- Acharya, V. M., & Thakor, A. (2015). *Caught between Scylla and Charybdis? Regulating Bank Leverage When There Is Rent Seeking and Risk Shifting*, *Review of Corporate Finance Studies*, 5 (1), pp. 36-75.
- Acharya, V. V., & Saunders, A. (2006). *Should Banks Be Diversified? Evidence from Individual Bank Loan Portfolios*. *The Journal of Business*, 79(3), 1355-1412.
- AFDB. (2018). East Africa Economic Outlook 2018: African Development Bank 2018; ISBN 978-9938-882-68-1.
- AfDB Group. (2014). Improving economic competitiveness to bring about shared growth. *The African Development Bank Group and Rwanda four decades of Partnership*;
- AFSA, M. (2015). *WORKING CAPITAL MANAGEMENT AND THE PERFORMANCE OF COMMERCIAL BANKS IN RWANDA: A Research Project Submitted in Partial Fulfillment of the Master of Business Administration (Finance; A Case study of Fina Bank main branch, Nyarugenge District-Kigali City*.
- Afzal, A., & Mirza, N. (2012). *Size, Diversification and Risk: Preliminary Evidence from Commercial Banks in Pakistan*. *Pakistan Journal of Commerce Social Sciences*, 6(2), 282-296.
- Agoraki, M. D., & Pasiouras, F. (2011). Regulations, competition and bank risk-taking in transition countries" *Journal of Financial Stability*, Vol. 7 No. 1, pp. 38-48.
- Aikaeli, J. (2008). *Commercial bank efficiency in Tanzania. A paper presented at a CSAE Conference on Economic Development in Africa, held at St. Catherine's College, Oxford, 16th – 18th. .*